

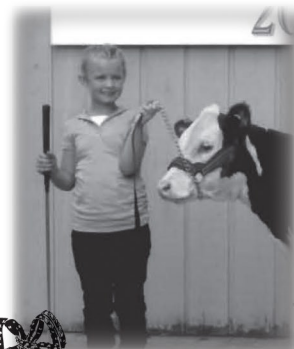
*Another Generation of
Cattle and Kids*



1968 with niece Holly



Our granddaughter Kyra



Holly's daughter —
Becca 2009

*Semen now available on
SSF JPF Keymaster*

**BW 4.2; WW 45; YW 77; MM 15; M&G 37;
FAT -0.02; REA 0.51; MARB -0.06**

Flushmate to the Keyshas.
\$20/Straw; \$20/Certificate

Parks Farms

John and Diane Parks
675 Hubbard Rd.
Bronson, MI 49028
(517) 741-7523

Merry Christmas from Michigan!